

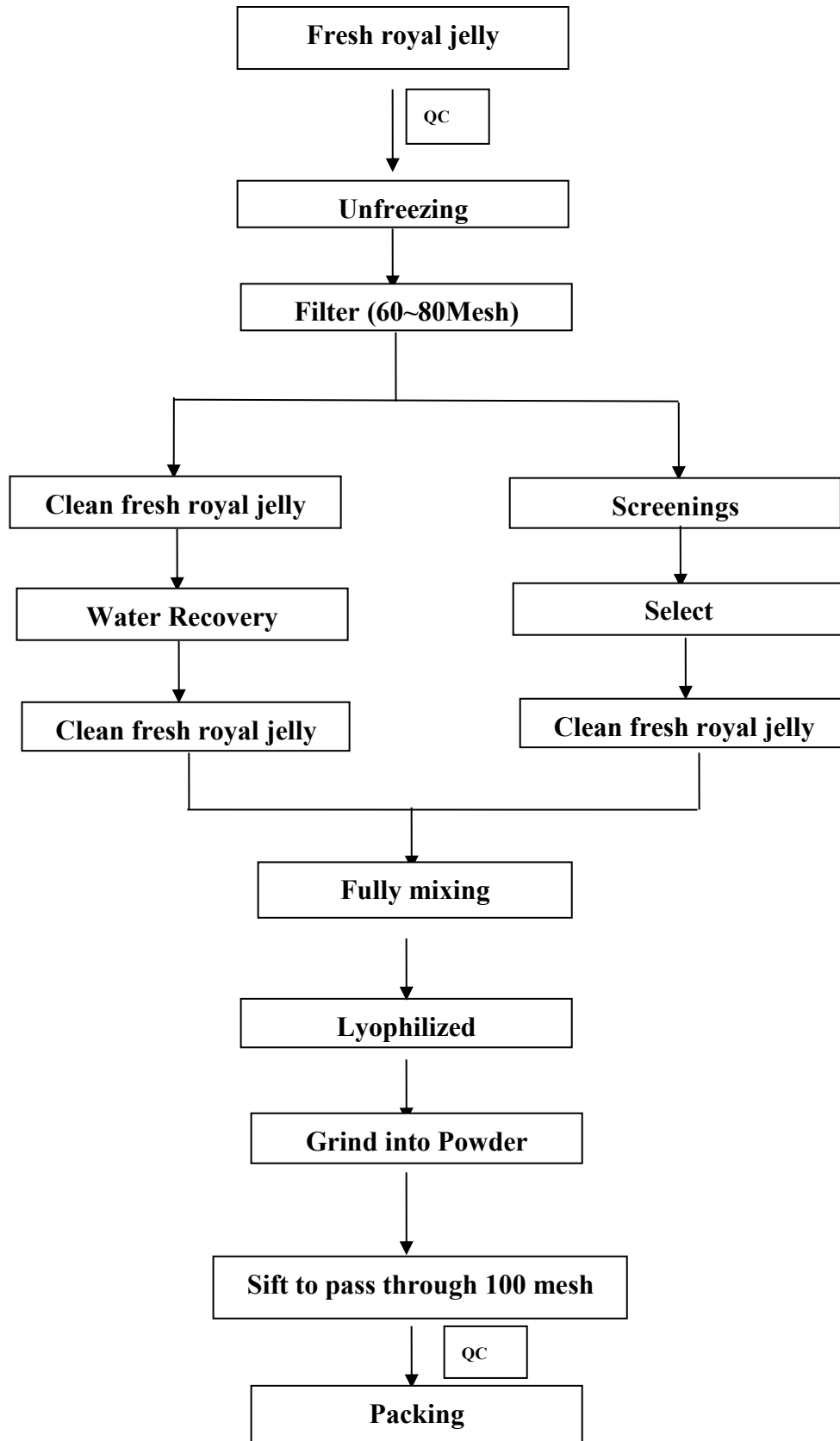


## Certificate of Analysis

<b>Product Name</b>	<b>Royal Jelly Extract</b>	<b>Batch Number</b>	<b>4323105</b>
<b>Specification</b>	<b>5%</b>		
<b>Plant Part Used</b>	Royal jelly	<b>Active Ingredient Markers</b>	10-HAD

Analysis Items	Specifications	Results	Test Methods
<b>Organoleptic</b>			
Appearance & Color	Fine off-white or light yellow powder	Conforms	Visual
Odor & Taste	Characteristic	Conforms	Organoleptic
Solubility	Partially soluble in water	Conforms	Visual
<b>Marker Compounds</b>			
Assay	NLT 5% 10-HDA	5.02%	HPLC
<b>Physical Characteristics</b>			
Mesh Size	NLT 95% through 100 mesh	Conforms	100 Mesh Screen
Bulk Density	0.45-0.65g/ml	Conforms	CP2015
<b>Other</b>			
Chloramphenicol	NMT 0.3ppb	Conforms	USP
5-Nitufuran	NMT 0.5ppb	Conforms	USP
<b>Heavy metals</b>			
Total Heavy Metals	NMT 10ppm	Conforms	CP2015
<b>Microbiological Tests</b>			
Total Plate Count	NMT 10,000cfu/g	Conforms	GB.4789.2
Total Yeast & Mold	NMT 1000cfu/g	Conforms	GB.4789.15
E. Coli	Negative	Conforms	GB.4789.38
Salmonella	Negative	Conforms	GB.4789.4
Staphylococcus	Negative	Conforms	GB.4789.10
GMO	Non-GMO		
Vegan Suitability	Yes		
<b>Storage</b>	Store in a well-closed container away from moisture.		

## Manufacturing Flow Chart Royal Jelly Powder





## Material Safety Data Sheet

<b>Company: MADAR Corporation Limited</b>	
<b>Product Name: Royal Jelly Powder</b>	
1.1	<b>Chemical Properties</b> :with typical properties of royal jelly
1.2	<b>Form</b> :Fine powder
1.3	<b>Color</b> : Fine off white or light yellow powder
1.4	<b>Odor</b> :Characteristic
2.	<b>Physical Properties</b> PH Value N/A Melting point N/A Boiling Point N/A Igniting point N/A Flash Point N/A Explosion Point N/A Bulk Density 0.45-0.65g/ml Solubility Partially soluble in water
3.	<b>Transport information</b> Far from away humidity, sunshine, high-temp., and acidic, alkaline substance.
4.	<b>Stability and Reactivity</b> 4.1. <b>Condition to be avoided</b> Humidity, sunshine, high-temp. 4.2. <b>Substances to be avoided</b> Acidic, alkaline substance 4.3. <b>Hazardous decomposition</b> Acid, base.

## **5. Protection, handling and storage**

### **5.1. Safety technical measure:**

Far away from fire, humidity and other hazardous chemicals

### **5.2. Personal Equipment**

**Respiratory Protection:** to use respirator when mesh the powder.

**Eye Protection:** to use special glasses when mesh the powder.

**Hand protection:** no need special protection measure, when contact hands, use water to wash.

**Other Information:** no more available

### **5.3. Industrial Hygiene**

To avoid the powder contact eye and respiratory system.

### **5.4. Explosion and fire fighting measures**

Use quantity water

### **5.5. Disposal condition**

Disposal properly

## **6. Accidental release measures/Fire fighting measures**

### **6.1. Accidental release measures**

Washing up the attached area with water

### **6.2. Suitable extinguishing media**

### **6.3. First aid measures**

In case of eye and skin contacted: rinse out with water

### **6.4. Other information**

No more information available.

## **7. Toxicological information**

**Royal Jelly Powder** has high safety coefficient. It belongs to actual nontoxicity determined

By acute toxicity experiment.

## **8. Ecological Information**

No ecological problems are to be expected when the product is handled and used with care and attention.

## **9. Other Information**

No more information available.



## Specification Sheet

<b>Product Name</b>	<b>Royal Jelly Powder</b>	<b>Plant Part Used</b>	<b>Royal Jelly</b>
---------------------	---------------------------	------------------------	--------------------

<b>Analysis Items</b>	<b>Specifications</b>	<b>Test Methods</b>
<b>Organoleptic</b>		
Appearance & Color	Fine off-white or light yellow powder	Visual
Odor & Taste	Characteristic	Organoleptic
Solubility	Partially soluble in water	Visual
<b>Marker Compounds</b>		
Assay	NLT 5% 10-HDA	HPLC
<b>Physical Characteristics</b>		
Mesh Size	NLT 95% through 100 mesh	100 Mesh Screen
Bulk Density	0.45-0.65g/ml	CP2015
<b>Others</b>		
Chloramphenicol	NMT 0.3ppb	USP
5-Nitofuran	NMT 0.5ppb	USP
<b>Heavy metals</b>		
Total Heavy Metals	NMT 10ppm	CP2015
<b>Microbiological Tests</b>		
Total Plate Count	NMT 10,000cfu/g	GB.4789.2
Total Yeast & Mold	NMT 1000cfu/g	GB.4789.15
E. Coli	Negative	GB.4789.3
Salmonella	Negative	GB.4789.4
Staphylococcus	Negative	GB.4789.10
<b>Storage</b>	Store in a well-closed container away from moisture.	
Shelf Life	2 years if sealed and store away from direct sun light.	